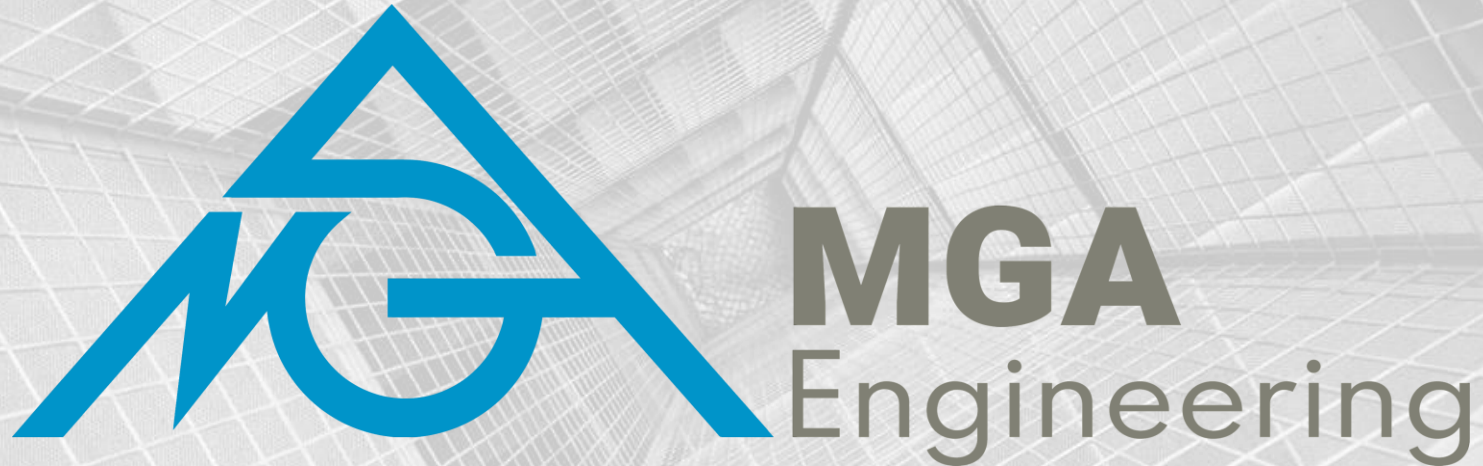


# EQUIPMENT PORTFOLIO



**MGA Engineering Inc.**

Suite 3000 - 817 15th Avenue SW  
Calgary, Alberta, Canada T2R 0H8  
<https://www.mgaeng.com/>

**Contact:**

Steven J. Keays, M.A.Sc., P.Eng.  
Vice President  
[steven.keays@mga-ind.com](mailto:steven.keays@mga-ind.com)  
Cell: 1-587-433-1504  
Direct: 1-587-383-6690

# ABOUT MGA

MGA Engineering Inc. is a master designer of structural and mechanical systems utilized across the globe in the marine, mining, infrastructure, and building sectors. Founded in 1996, the firm is headquartered in Calgary, Canada, and operates regional offices in Canada, USA, and Egypt. Throughout the decades, MGA has lent its expertise to owners, operators and fabricators of large-scale bulk materials handling equipment such as conveyors, ship loaders, stackers/reclaimers, crushers, storage tanks, vessels and transfer stations.

Over the decades, MGA has worked with all major Original Equipment Manufacturers (OEM), including Takraf, ThyssenKrupp, PHB, FAM, MWS, FLSmidth, Shinhan, and Sandvik.

# BULK MATERIAL HANDLING

MGA's core expertise is anchored at BHM installations typically found in the mining, marine ports, and oilsands industries. MGA expertise is available in CAPEX and OPEX:

## CAPEX: New equipment

(needs analysis, planning, design, design-build, erect, commission)

## OPEX-A: Equipment in operation

(repairs, troubleshooting, modifications, alterations, senescence)

## OPEX-B: Inspection, Testing & Certification

(maximization of economic life of operating assets)

### BULK TRANSFER

- Single-boom spreaders
- Mobile stacking bridges
- Transport crawlers
- Stacker and reclaimers (single & combined)
- Bucket wheel reclaimer (boom & bridge)
- Scraper, drum, and portal reclaimers
- Portal and bridge-type scraper reclaimers
- Ship loaders & unloaders
- Grab type ship unloader
- Circular storage with stacker/bridge reclaimer

### BULK TREATMENT

- Crushing plants
- Breakers and high-pressure grinding rolls
- Roll crushers and double roll crushers
- Belt linear screens
- Hard rock sizers
- Slurries plant and tailings
- Primary separation cells and flotation cells
- Granulators
- Vacuum belt filters for dewatering

### EXCAVATORS

- Bucket chain excavators
- Bucket wheel excavators

### TRANSPORT

- Apron feeders
- Belt conveyors
- Belt feeders
- Mobile conveyor bridges
- Mobile transfer conveyors
- Tube conveyor
- In-plant conveyor systems
- Pipe conveyor systems
- Steel belt conveyors

### FACILITIES & Buildings

- Wagon / truck loading
- Wagon unloading / tripper
- Rapid train load-out station
- Storage pits
- Tanks and reservoirs
- Pressure vessels and bullets
- Process piping
- Pipe racks
- Steel structures



## **CAPEX engagements encompass:**

- ▶ Concepts: feasibility studies, equipment and layout options
- ▶ Definition: Selection, constraints, scoping (budgets & timelines)
- ▶ Conception: Design, layouts, execution planning
- ▶ Procurement: purchases, contracts, leases, logistics
- ▶ Realization: Fabrication, transportation, construction, erection, commissioning, certification, start-up
- ▶ Operations: Field support, troubleshooting, modifications

# CAPEX EXPERTISE

## **OPEX–A engagements keep the assets operating profitably:**

- ▶ Assessments of structural and mechanical integrity
- ▶ Failure analysis and prevention
- ▶ Fracture and fatigue assessments, detection, and mitigation
- ▶ Design of alterations, modifications, upgrades, and repairs
- ▶ Design assessments of performance enhancements, capacity increases, reliability improvements, and automation opportunities

# OPEX–A EXPERTISE

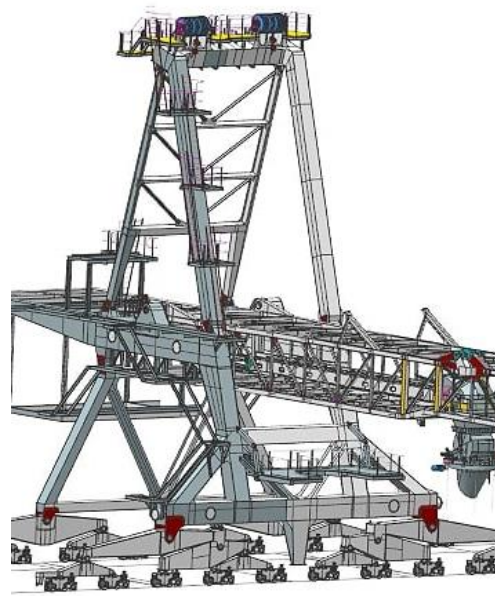
## OPEX–B engagements extend the economic life of assets:

- ▶ In-situ inspections of equipment under static and operating conditions for detection of structural, mechanical, and operational problems, concerns or issues.
- ▶ Corrosion, erosion and structural degradation detection, and progress monitoring
- ▶ Testing, troubleshooting, and identification of remedial options & opportunities for improvements and/or degradation mitigation
- ▶ Certification of operational & structural compliance to Codes, Standards, and Permit requirements
- ▶ Risk mitigation: risks of failure, to productivity, to health, safety and the environment, to reliability, to budgets, and to shareholders' returns on investment.
- ▶ Design options for extending the economic life of operating or idle equipment.

# OPEX–B EXPERTISE

# SALIENT EXAMPLES



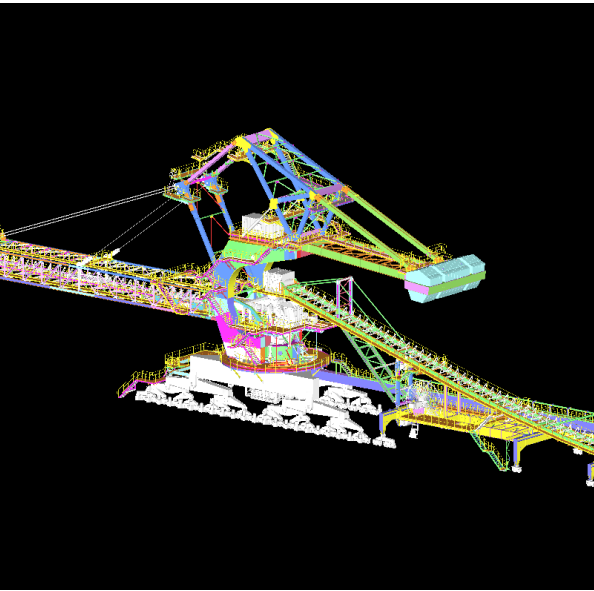
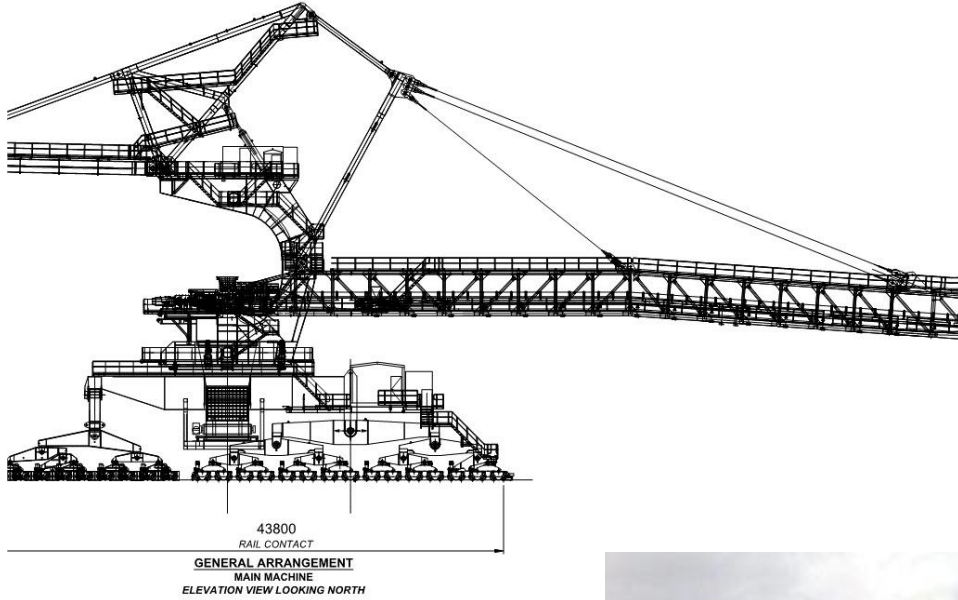


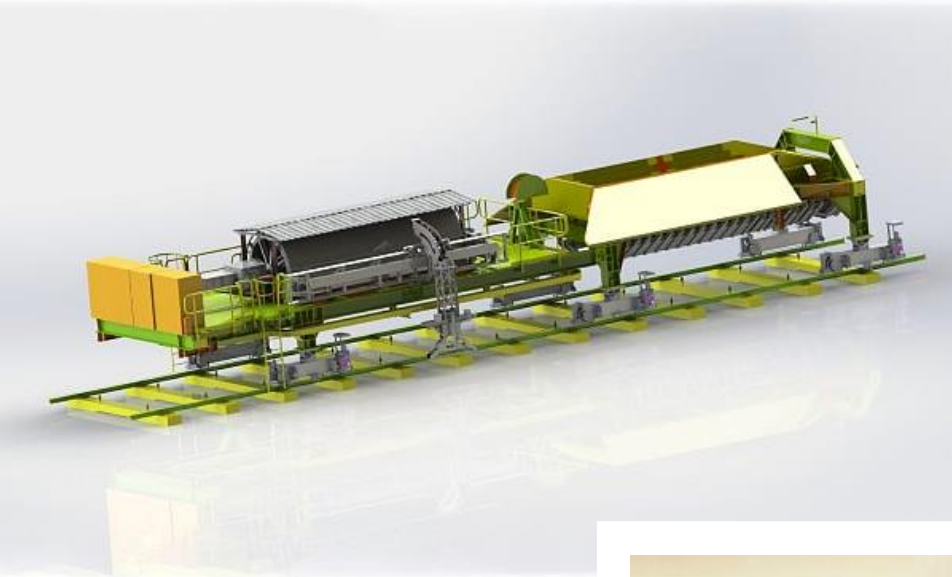
# SHIP LOADERS & UNLOADERS





# STACKERS AND RECLAIMERS





# CONVEYORS



# ANTUCOYA CONVEYOR SYSTEM



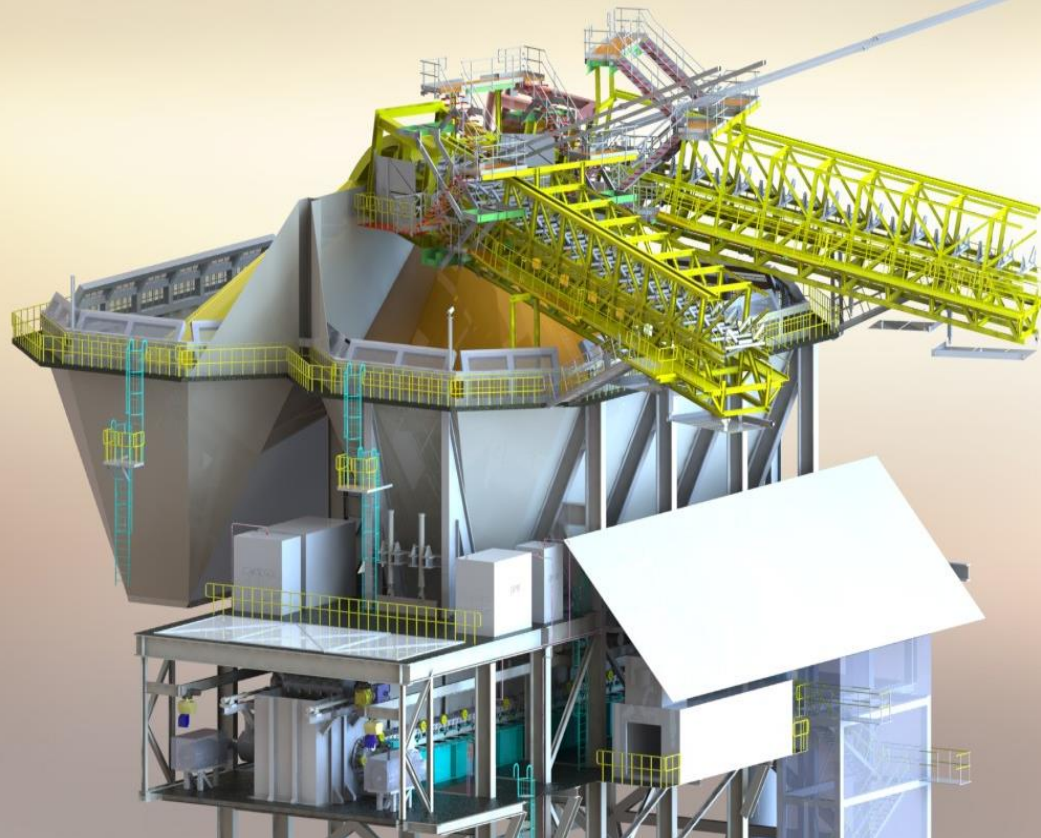




# PRIMARY CRUSHING SYSTEMS





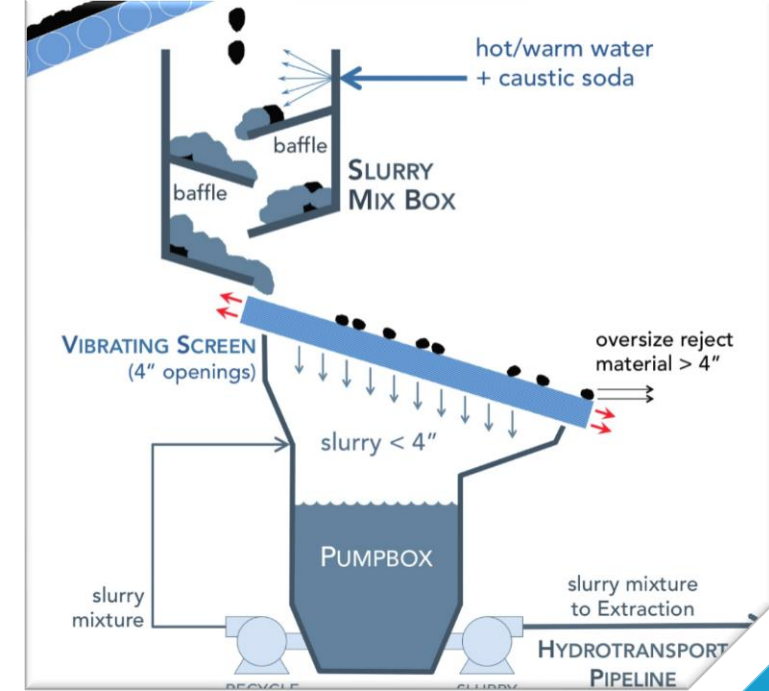


# SURGE FACILITIES





# SLURRY PREPARATION PLANTS



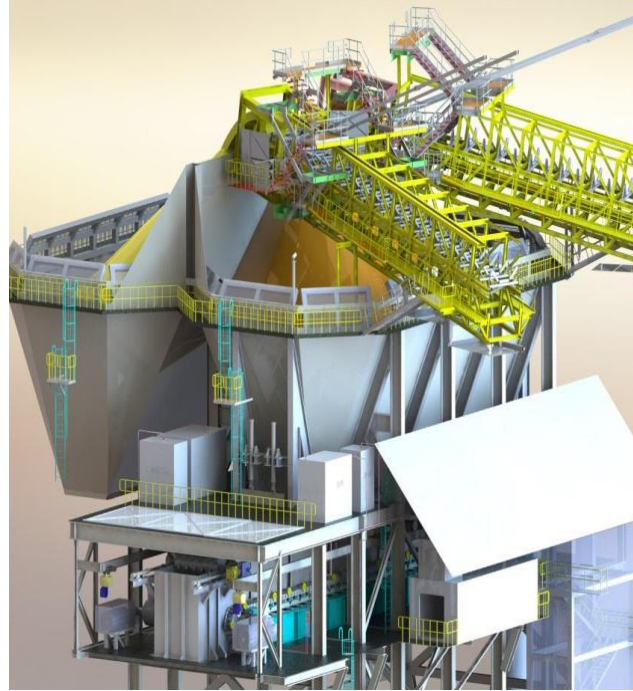
# SLURRY PUMP BOXES



# PRIMARY SEPARATION CELLS



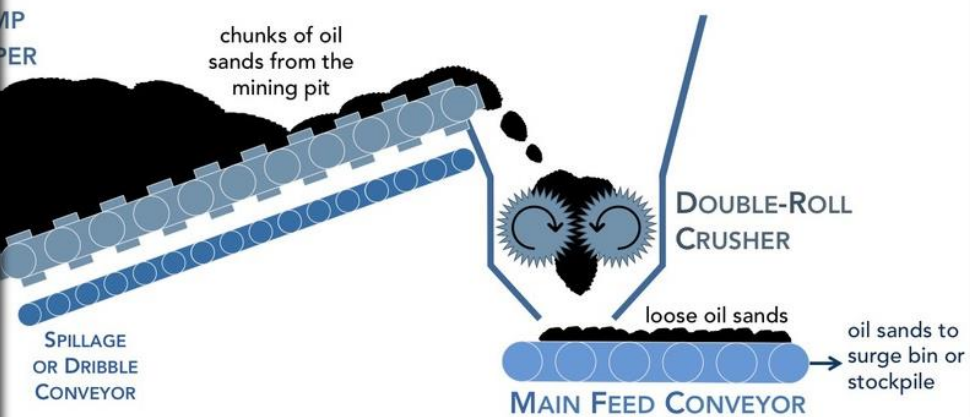




# SURGE BINS

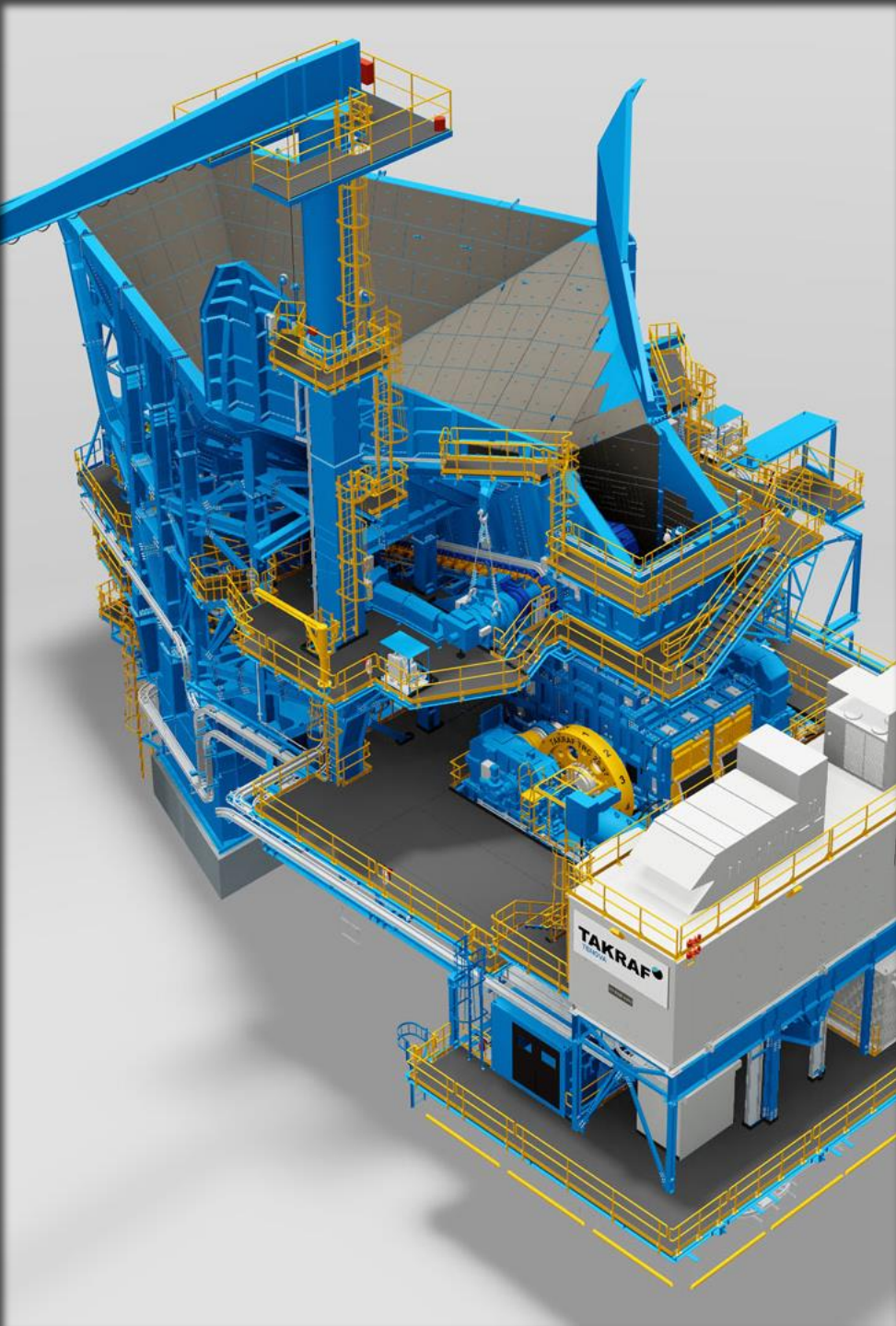


[www.oilsandsmagazine.com](http://www.oilsandsmagazine.com)



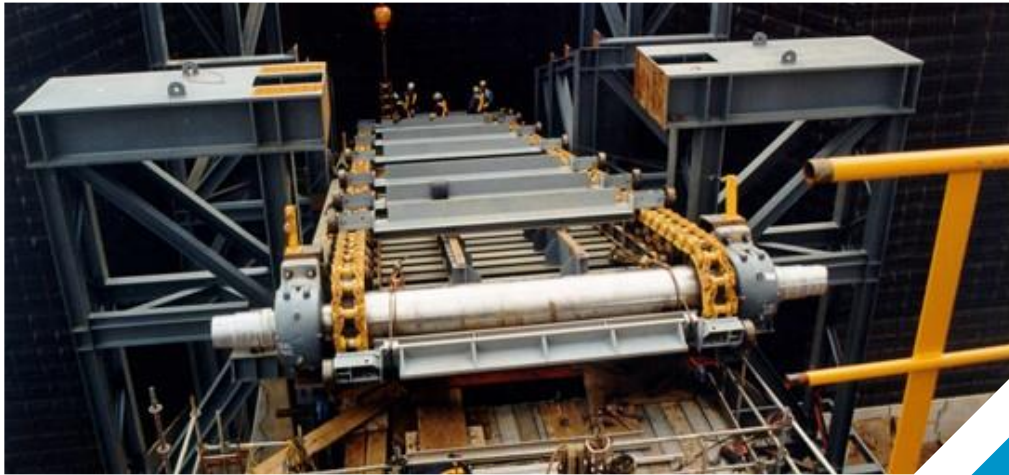
# CRUSHING PLANTS





# HOPPERS





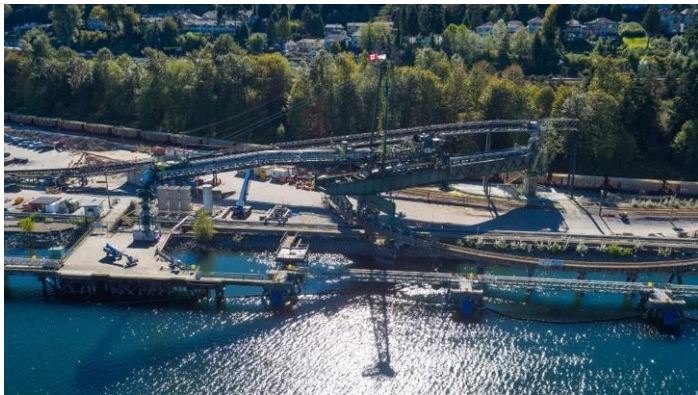
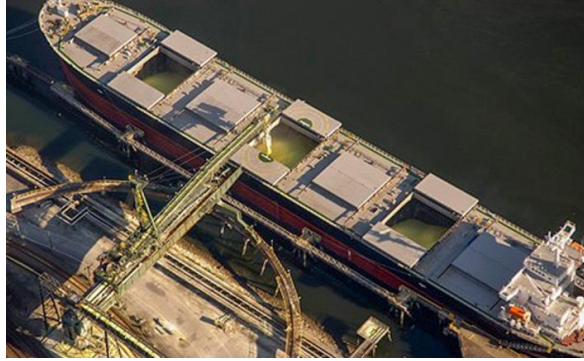
# HOPPER INSTALLATION



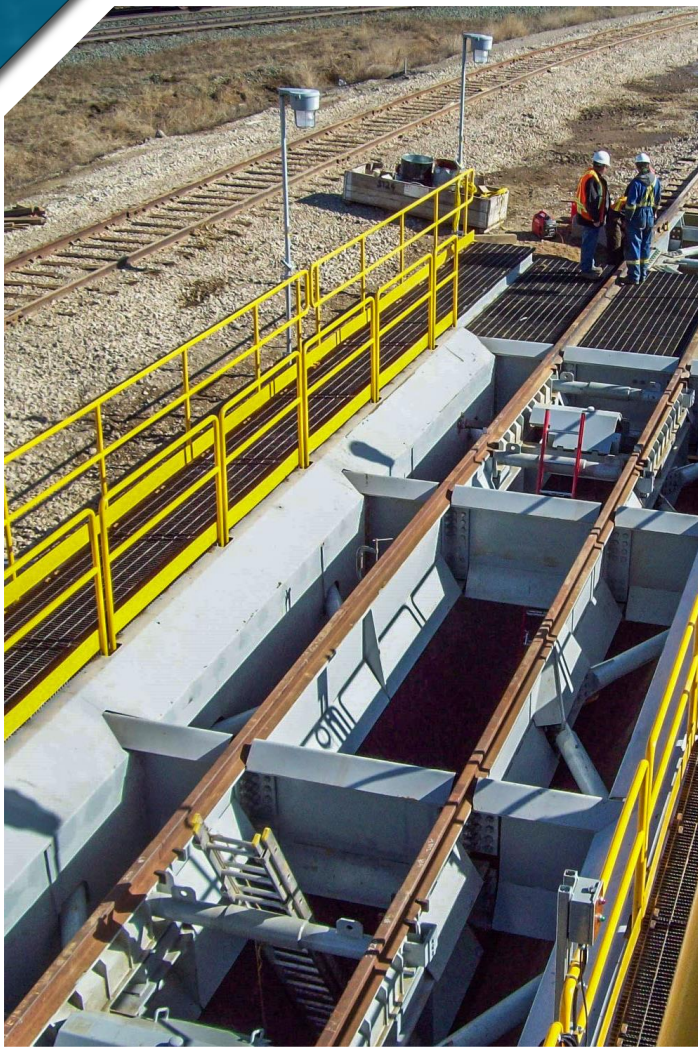
# MATURE FINE TAILINGS CENTRIFUGING PLANT



# TERMINALS



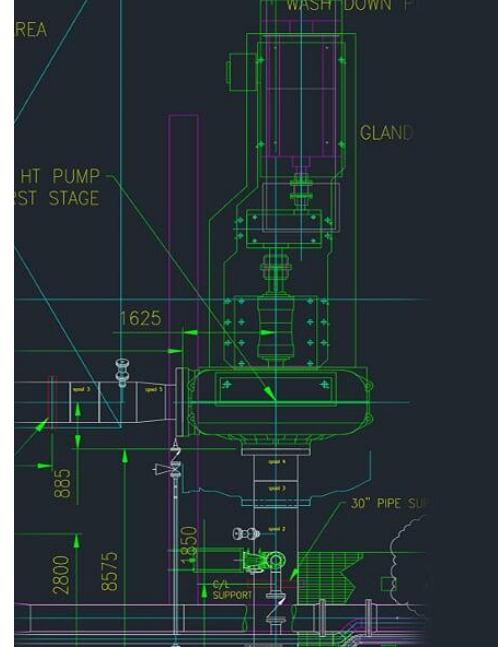




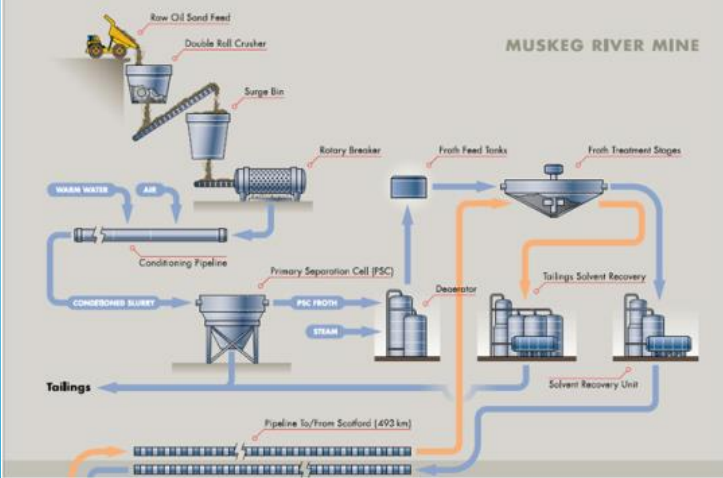
# RAIL



# SPECIAL STRUCTURES AND EQUIPMENT







# SPECIAL SYSTEMS



**Canada****Head Office**

Suite 2800, 817 – 15<sup>th</sup> Avenue SW  
Calgary, Alberta T2R 0H8

2828 Boulevard Laurier,  
Suite 734, Tour 1 Norton-Rose  
Québec City, Quebec G1V 0B9

**USA**

MGA USA ENGINEERS LLC  
970 Lake Carillon Drive, Suite 300  
St. Petersburg, Florida, USA 33716

MGA USA ENGINEERS LLC  
1 American Dream Way  
East Rutherford, New Jersey 07073

**Egypt**

MGA Technology  
30 Samir Mokhtar St.  
9th & 10th Floor Ard El Golf  
Heliopolis, Cairo

**Mexico**

Calle Jacarandas #8, Balcones De Loma Linda  
Mazatlán, Sinaloa, CP 82000

**Ecuador**

The Scot Group (MGA Agent)  
Ave. Pedro Menendez Gilbert,  
Puerto Santa Ana , Edificio  
The Point, Piso 26, .Ofc. 2611  
Guayaquil

**Brazil**

JJ Infraestrutura e Engenharia Ltda (MGA Agent)  
Avenida Mato Grosso 676, Anápoli  
Goiás, Zip Code 75.113-170

# Contacts

*Steven J. Keays, M.A.Sc., P.Eng.*  
Vice President  
[steven.keays@mga-ind.com](mailto:steven.keays@mga-ind.com)

*Michael J. Pankowski, B.Com.*  
Commercial Strategist  
[michael.pankowski@mga-ind.com](mailto:michael.pankowski@mga-ind.com)

