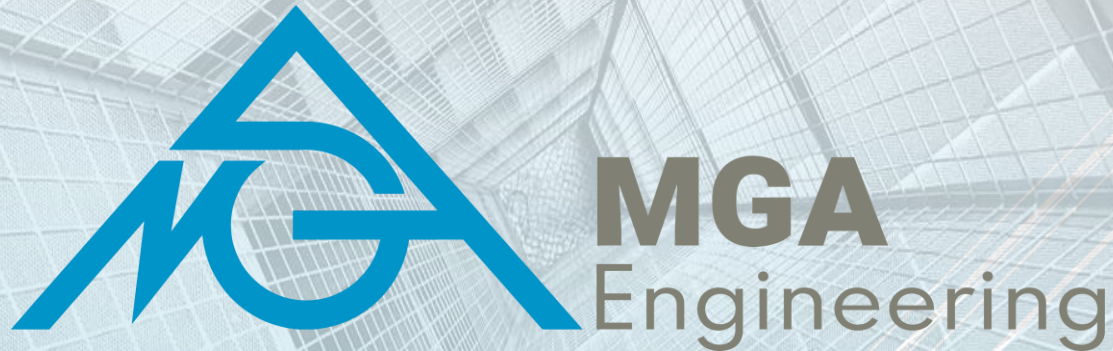


CONVEYORS & MATERIALS HANDLING



MGA Engineering Inc.
Suite 2800 - 817 15th Avenue SW
Calgary, Alberta, Canada T2R 0H8
<https://www.mgaeng.com/>

Contact:
Steven Keays, Vice-President
steven.keays@mga-ind.com
Cell: 1-587-433-1504
Direct: 1-587-383-6690

ABOUT MGA

MGA Engineering Inc. is a master designer of structural and mechanical systems, utilized across the globe in the marine, mining, energy, infrastructure, and building sectors.

Founded in 1996, the firm is headquartered in Calgary, Canada, and operates regional offices in Canada, USA, and Egypt. Throughout the decades, MGA has lent its expertise to owners, operators and fabricators of large-scale bulk materials handling equipment such as conveyors, ship loaders, stackers/reclaimers, crushers, storage tanks, vessels and transfer stations.

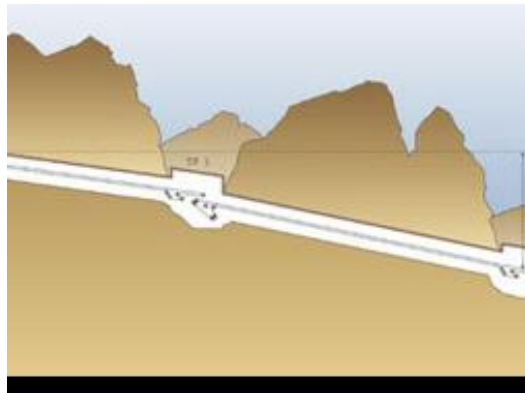
CONTENTS

- ▶ Conveyors
- ▶ Material handling – oil sands
- ▶ Material handling – Mines
- ▶ Special structures
- ▶ Field Support and troubleshooting

MGA has worked with all major Original Equipment Manufactures (OEM) over the decades, including Takraf, Thyssen Krupp, PHB, FAM, MWS, FL Schmidt, Shinhan, and Sandvik.

CONVEYORS

LOS PELAMBRES CHILE

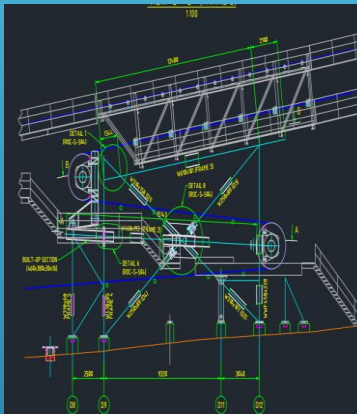
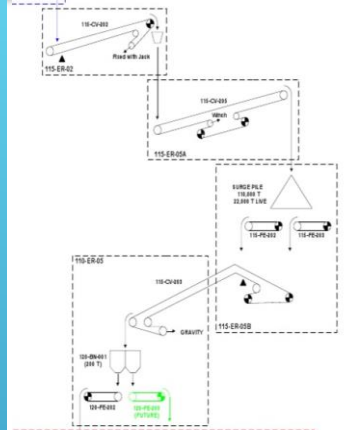
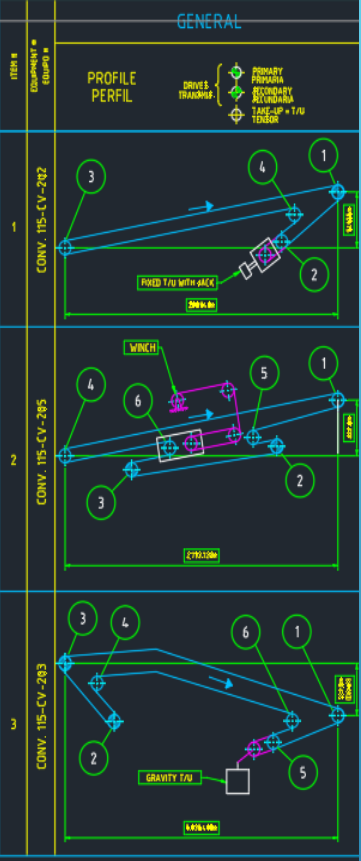


System Length - 12,700 m
 Longest Conveyor - 5,630 m
 Drop of System - 1,300 m
 Design Capacity - 8,700 mtph
 Belt Speed - 6.0 m/s
 Conveyor Width - 1,800 mm (72")
 Belt Rating - ST 7,800
 Idler Class - CEMA E6
 Installed Motor Power - 10 x 2,500 kW
 Brake System - 13 low speed discs with
 2500mm diameter
 Motor Control - Variable Frequency Drives

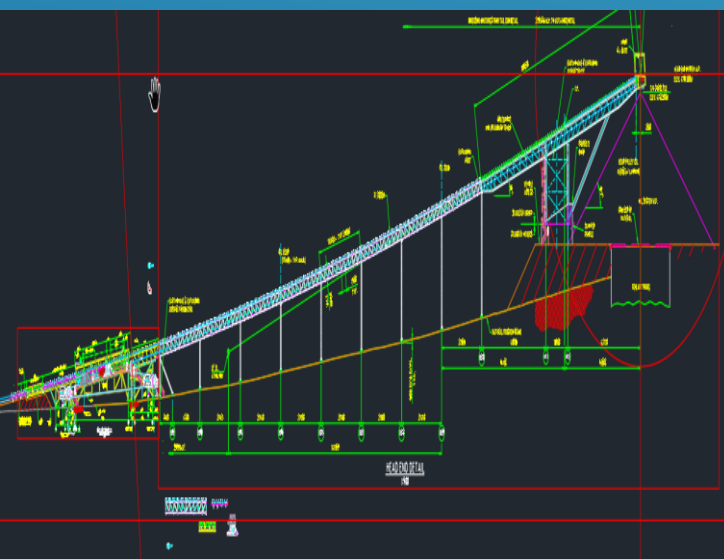
Conveyor Length - 2,400 m
Lift of System - 250 m
Design Capacity - 2,000 mtph
Belt Speed - 3.9 m/sec
Conveyor Width - 54"
Belt Rating - ST 4,000
Idler Class - CEMA D6
Installed Motor Power - 2 x 1,250 kW
Motor Control - Variable Frequency Drives



PIERINA OVERLAND CONVEYOR-PERU



- ▶ Copper Ore
- ▶ Capacity: 8500 tph
- ▶ Belt: 72", ST2000/ST6300
- ▶ Power operating (kW): 1500/7865/-6500



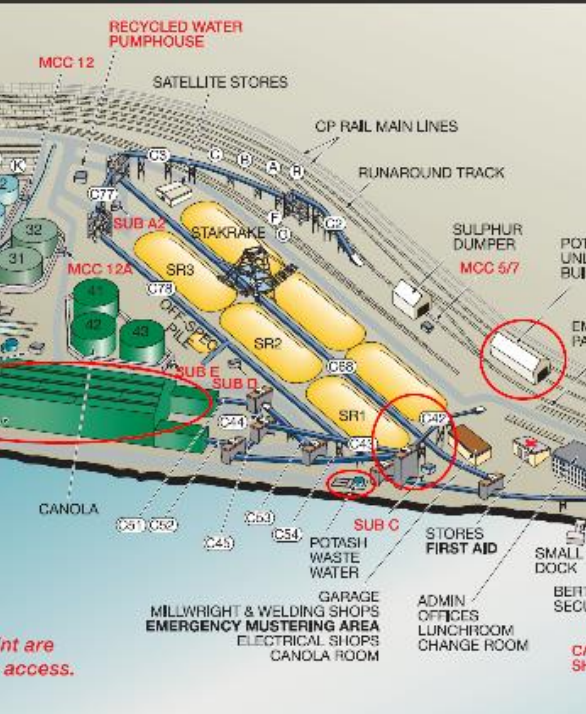
UJINA ROSARIO TRANSITION PROJECT COLLAHAUSI-CHILE



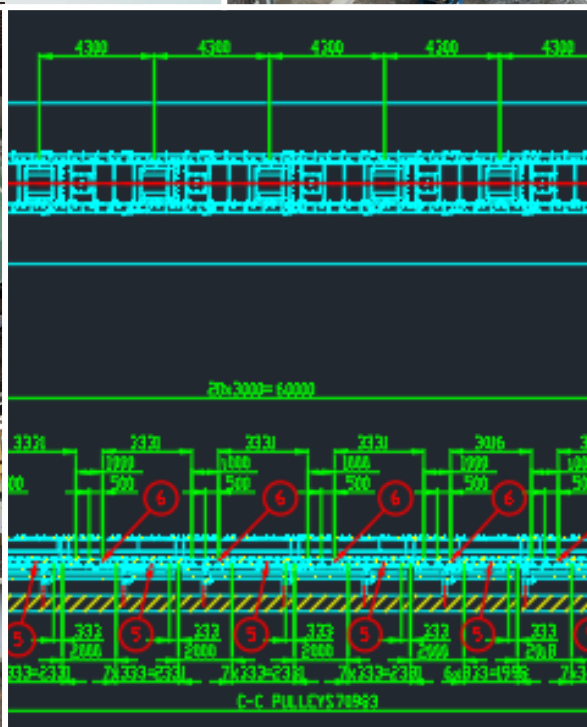
- ▶ Technical support for the overland conveyor
- ▶ Tripper design trouble shooting
- ▶ Drive design audits



OYU TOLGOI MINE MONGOLIA SANDVIK



- ▶ Engineers of Record for the Structural and Mechanical systems
- ▶ 4,000 mtph
- ▶ 1829mm belt



PACIFIC COST TERMINALS/KS POTASH CONVEYING SYSTEM-SANDVIK



SEPT-ILES HARBOUR CONVEYORS POINT NOIRE QUAI NO 35

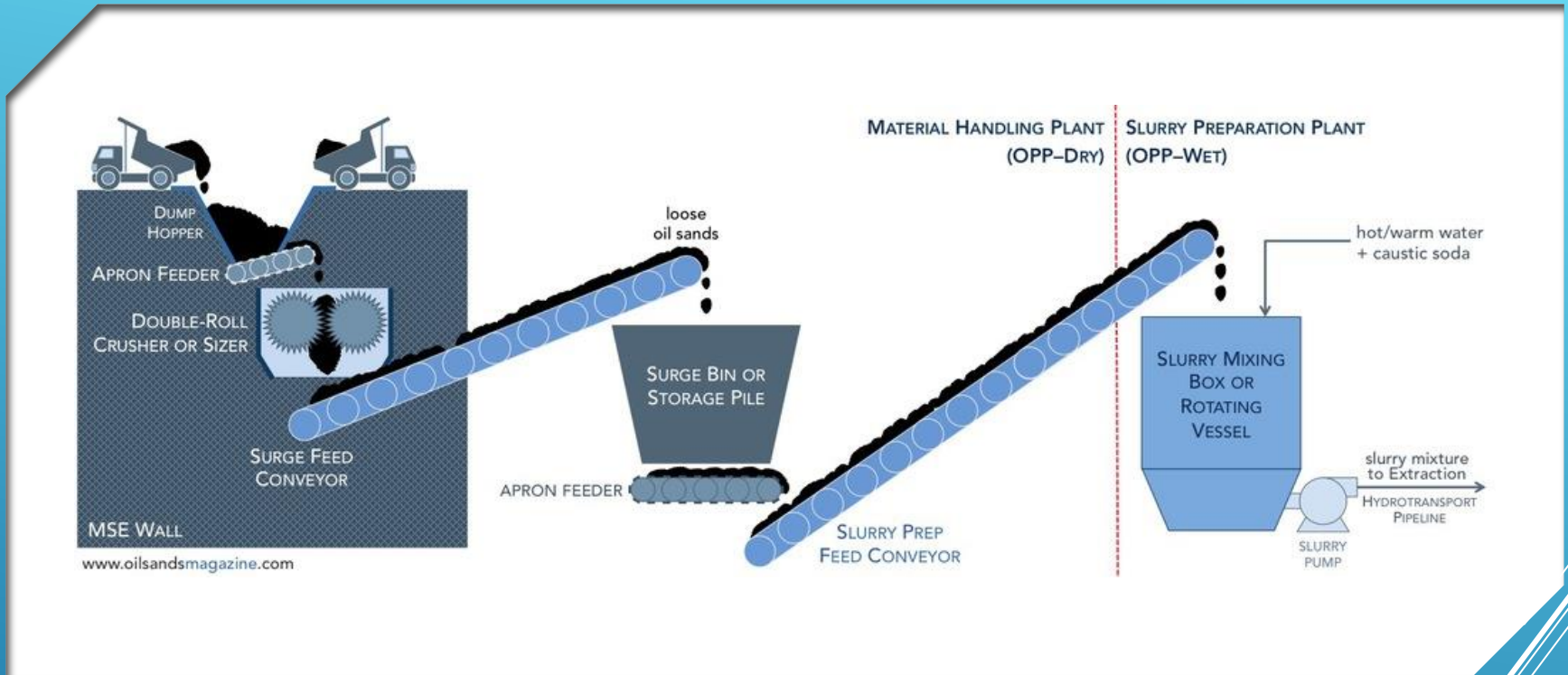
- ▶ Materials: Iron ore
- ▶ Capacity: 8,000 tph
- ▶ Speed: 3m/s
- ▶ Length: 371 and 225m



MINING IN SOUTH AMERICA BULK MATERIAL HANDLING

MATERIALS HANDLING OILSANDS

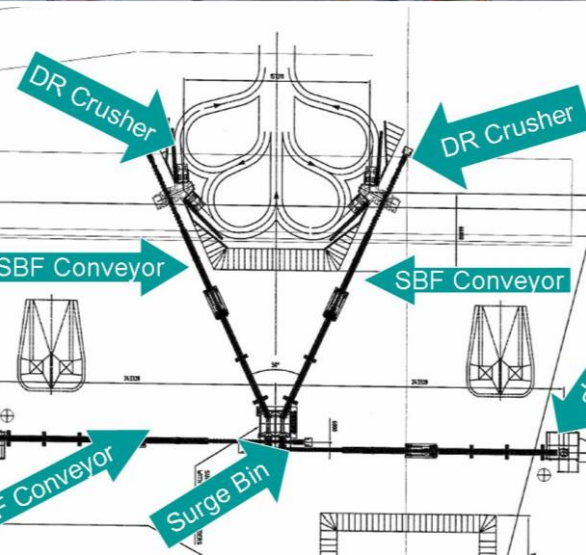
12/25

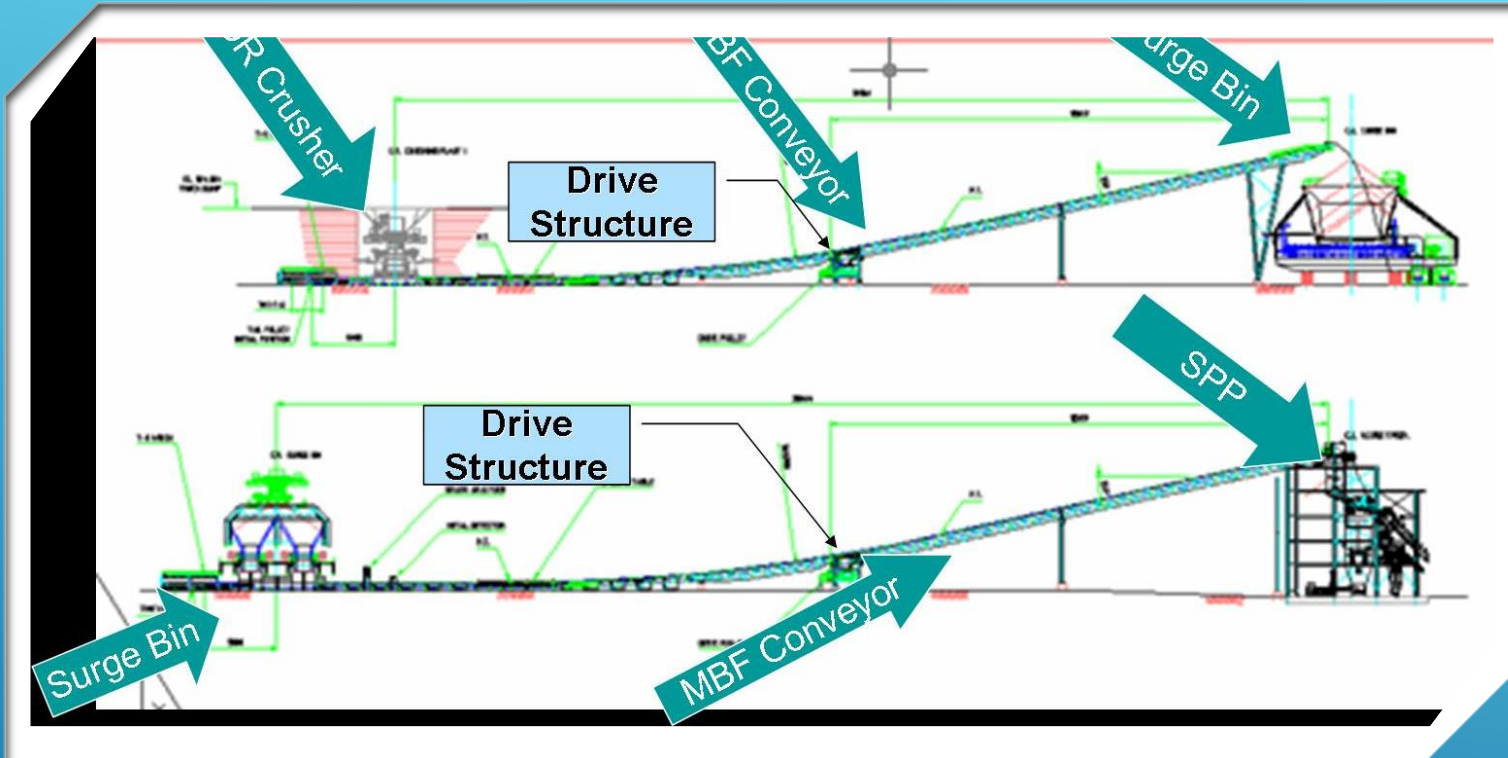


INSTALLATION LAYOUT

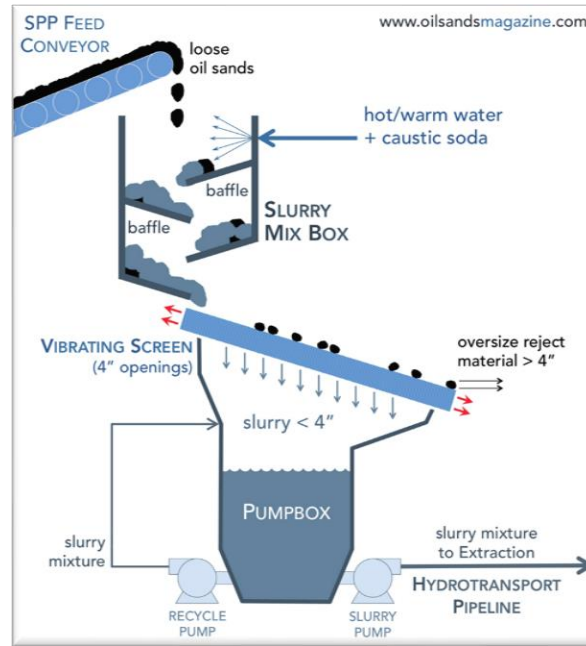


SURGE FACILITY CNRL HORIZON





MATERIAL MOVEMENT CNRL HORIZON



SLURRY PUMP BOXES

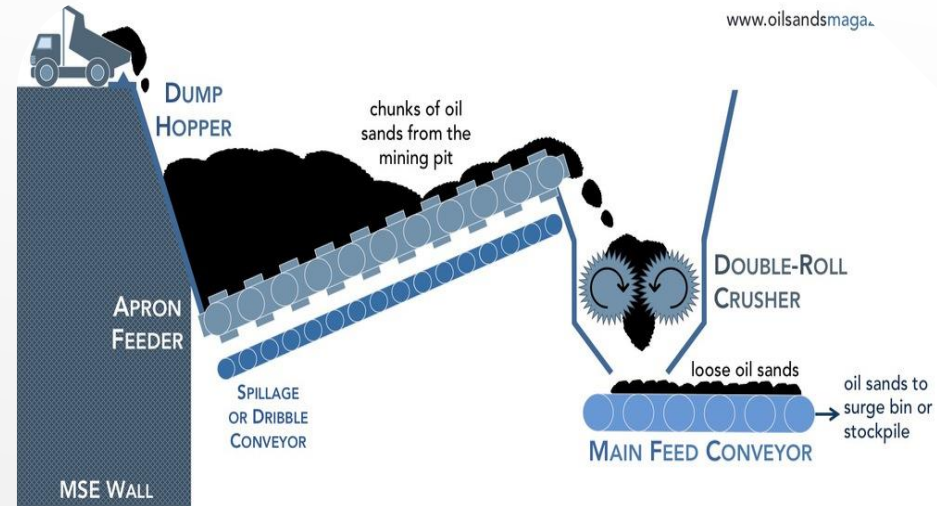
PRIMARY SEPARATION CELLS

MATERIALS HANDLING MINES

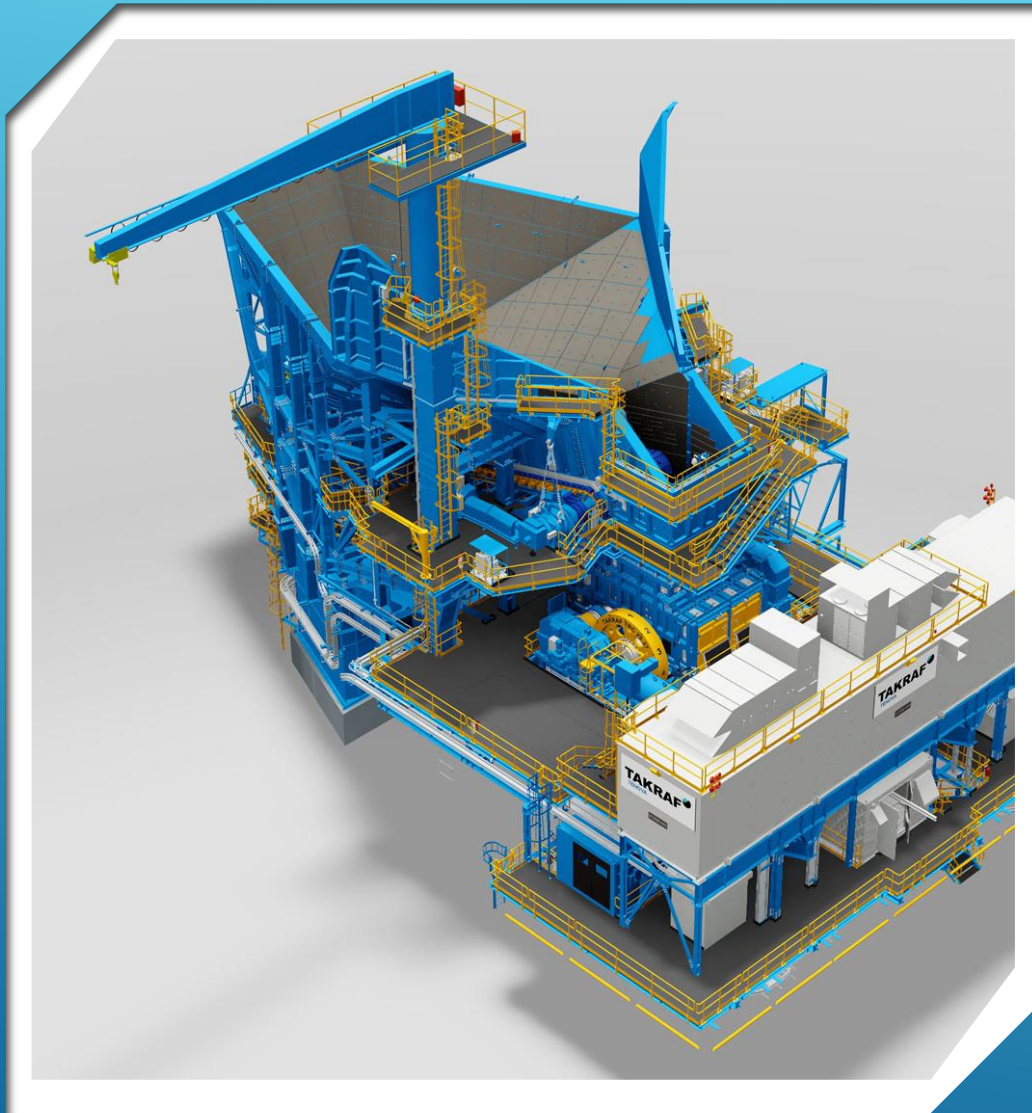


- ▶ SHOP DRAWING
- ▶ PRODUCTION
- ▶ FABRICATION
- ▶ SUPERVISION

SURGE BINS



CRUSHING PLANTS



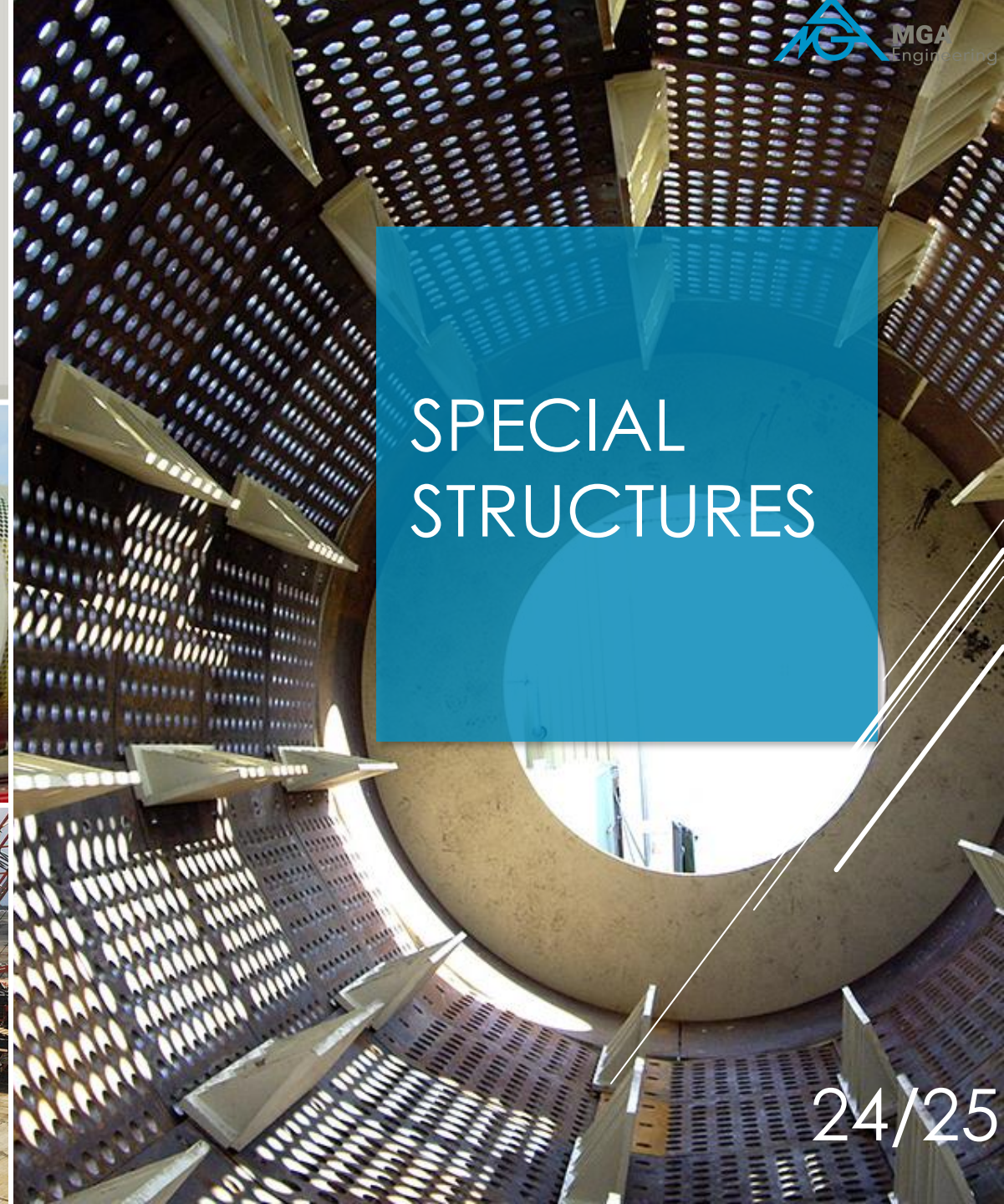
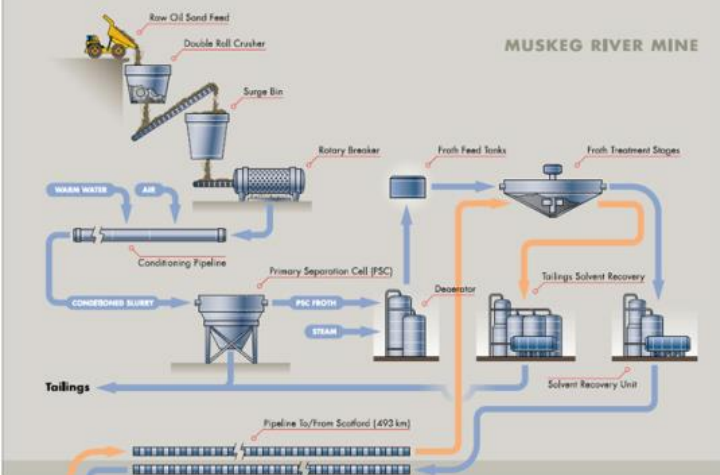
HOPPERS



HOPPER INSTALLATION



MATURE FINE TAILINGS CENTRIFUGING PLANT



SPECIAL STRUCTURES

Head Office

Suite 2800, 817 – 15th Avenue SW
Calgary, AB T2R 0H8
Canada

Cairo Office

MGA Technology
28 Samir Mokhtar St., 9th & 10th Floor Ard El Golf
Heliopolis, Cairo, Egypt

Quebec City Office

MGA Engineering Inc.
2828 Boulevard Laurier,
Suite 734, Tour 1 Norton-Rose
Québec City, QC, G1V 0B9
Canada

Florida Office

MGA USA ENGINEERS LLC
7901 4th St N, STE 300
St. Petersburg, Florida 33702
USA

Contact

Steven J. Keays, M.A.Sc., P.Eng.

Vice President

Steven.keays@mga-ind.com

D: +1 587-393-6690

C: +1 587-433-1504